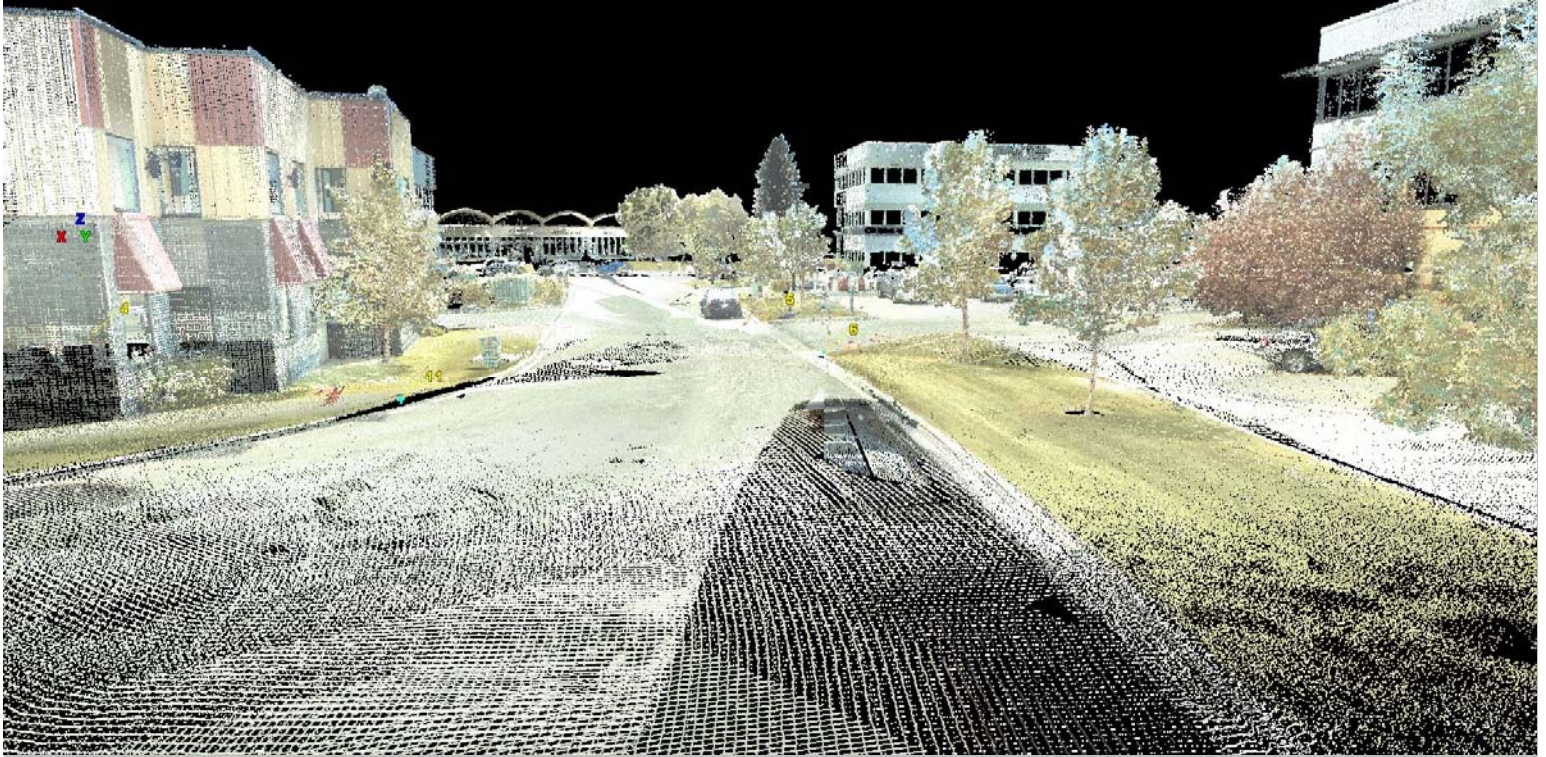


# TERRESTRIAL LASER SCANNER



## KEY ATTRIBUTES

### FIELD BENEFITS

Data collection is safer, faster, less intrusive and more informative

### 3D MODELS

Models produced from this data can be used to create 3D visual reproductions

### USER-FRIENDLY

Multiple products can be produced such as SHP, DWG, DXF, LAS, DSM

### WEB ACCESS

Point cloud data can be uploaded into a web-based environment allowing access from anywhere in the world

## SENSIBLE SOLUTIONS THAT OPTIMIZE YOUR BUSINESS

Mission utilizes state of the art technology to create high accuracy 3D point clouds created by ultra-high speed scanners measuring up to 1 million points per second.

From point clouds, 3D models are created, which can be used in multiple applications, such as:

- Deformation analysis
- Civil Engineering
- As-built Surveys
  - Pipelines
  - Plant Sites
  - Tunneling
- Asset Management

For more information contact:

Jaroslav Geba

[jgeba@mgeo.ca](mailto:jgeba@mgeo.ca)

Mike Fretwell

[mfretwell@mgeo.ca](mailto:mfretwell@mgeo.ca)

or call us at 403.668.4604, to discuss your needs.



# TERRESTRIAL LASER SCANNER

