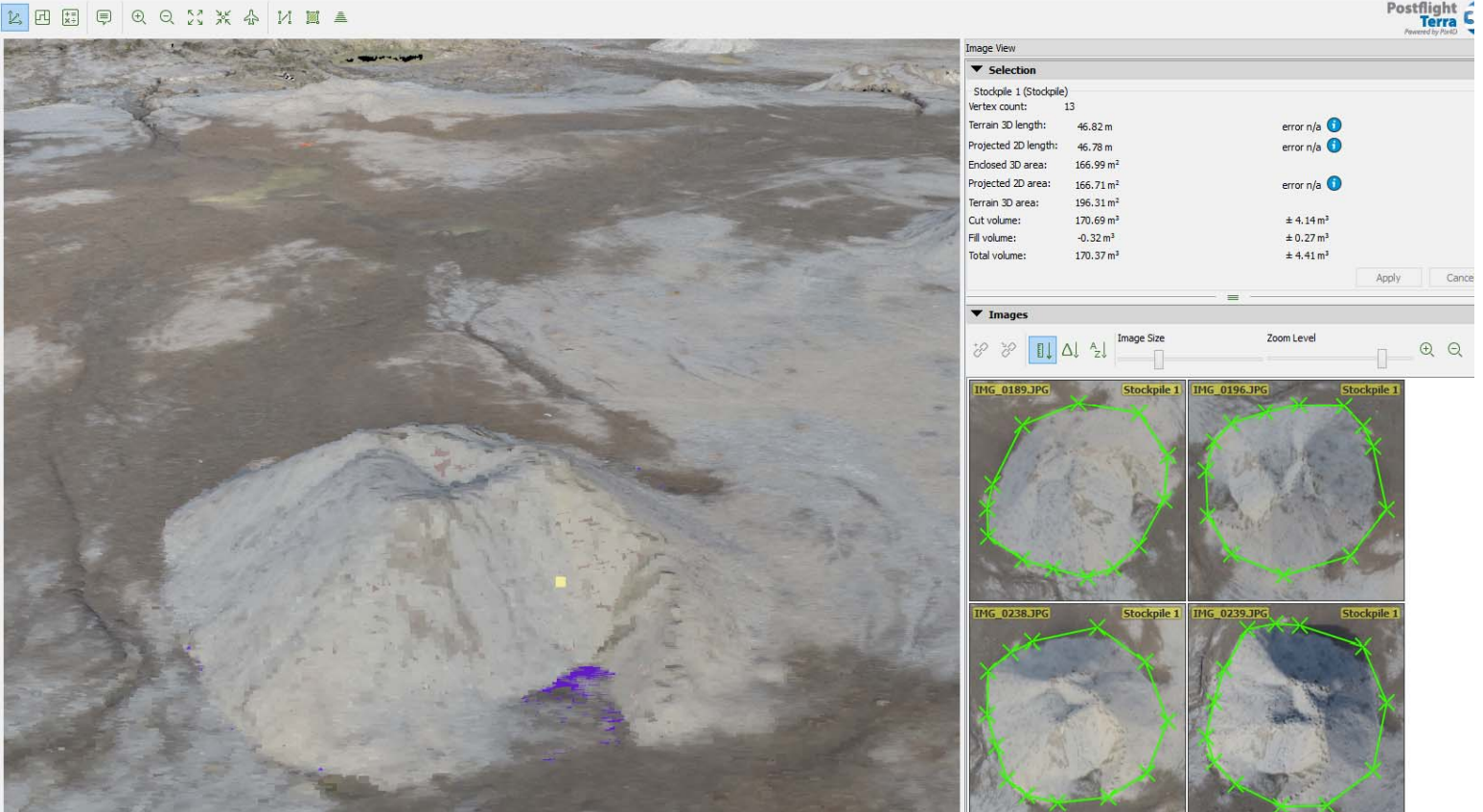


# UNMANNED AERIAL IMAGERY



## KEY ATTRIBUTES

### COST-EFFECTIVE SOLUTION

eBee can fly over a large area and produce stunning orthophotos and DSMs within a few days compared to traditional methods

### MULTIPLE APPLICATIONS

Some common applications are environmental management, conservation, mining, surveying, and agricultural management

### CUSTOM DELIVERABLES

As-built plans, topographical maps, volumetric charts etc. can be produced

## SENSIBLE SOLUTIONS THAT OPTIMIZE YOUR BUSINESS

UAVs (Unmanned Autonomous Vehicles) have recently been introduced into civilian aviation and can be a cost-effective solution for aerial data acquisition. Mission's eBee can produce orthophotos with up to 3cm per pixel resolution and Digital Surface Models (DSMs) over large areas such as gravel pits, open-pit mines and active construction sites.

UAVs are the wave of the future and Mission is on the leading edge of the technology's use.

For more information contact:

Jaroslav Geba

[jgeba@mgeo.ca](mailto:jgeba@mgeo.ca)

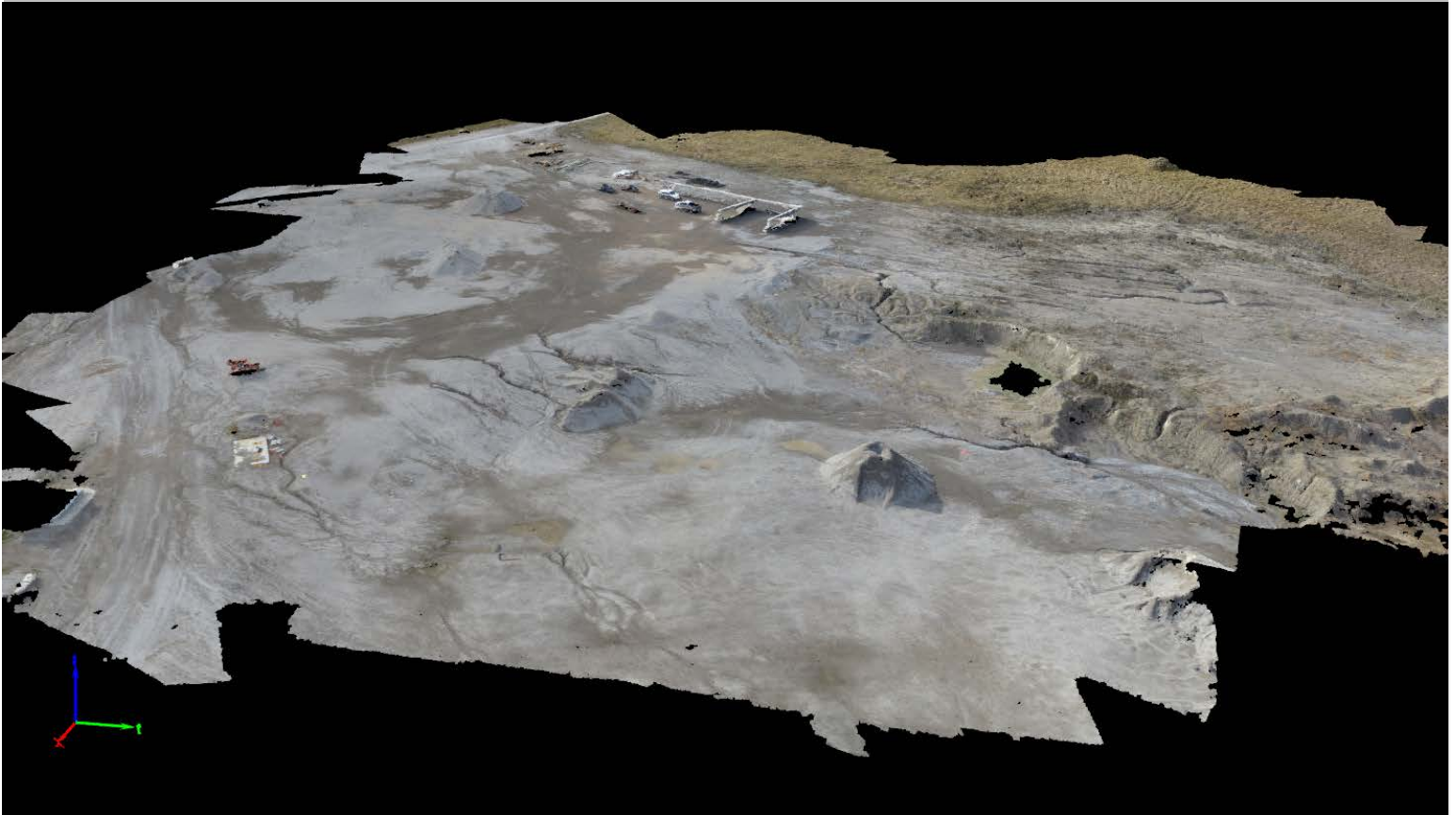
Mike Fretwell

[mfretwell@mgeo.ca](mailto:mfretwell@mgeo.ca)

or call us at 403.668.4604, to discuss your needs.



# UNMANNED AERIAL IMAGERY



Raw data courtesy of Spatial Technologies  
Photo of eBee courtesy from senseFly

